



SOUTHWEST CORRIDOR LIGHT RAIL PROJECT

**Community Advisory Committee
February 7, 2019**

Acronym



SWC: Southwest Corridor

LRT: Light Rail Transit

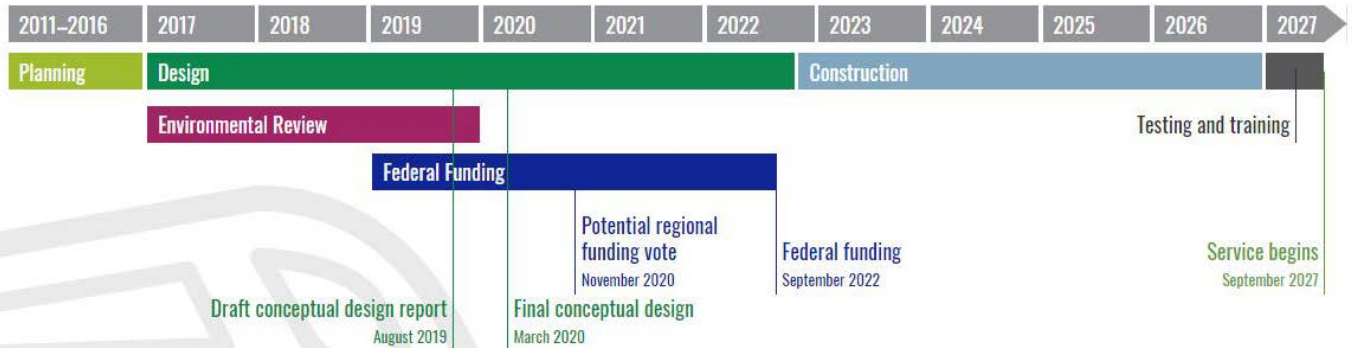
CAC: Community Advisory Committee

SWEDS: Southwest Equitable
Development Strategy

Public comment

- Guests who wish to speak sign up upon arrival
- Guests are also encouraged to provide written comments
- Opportunity for CAC to hear from stakeholders directly

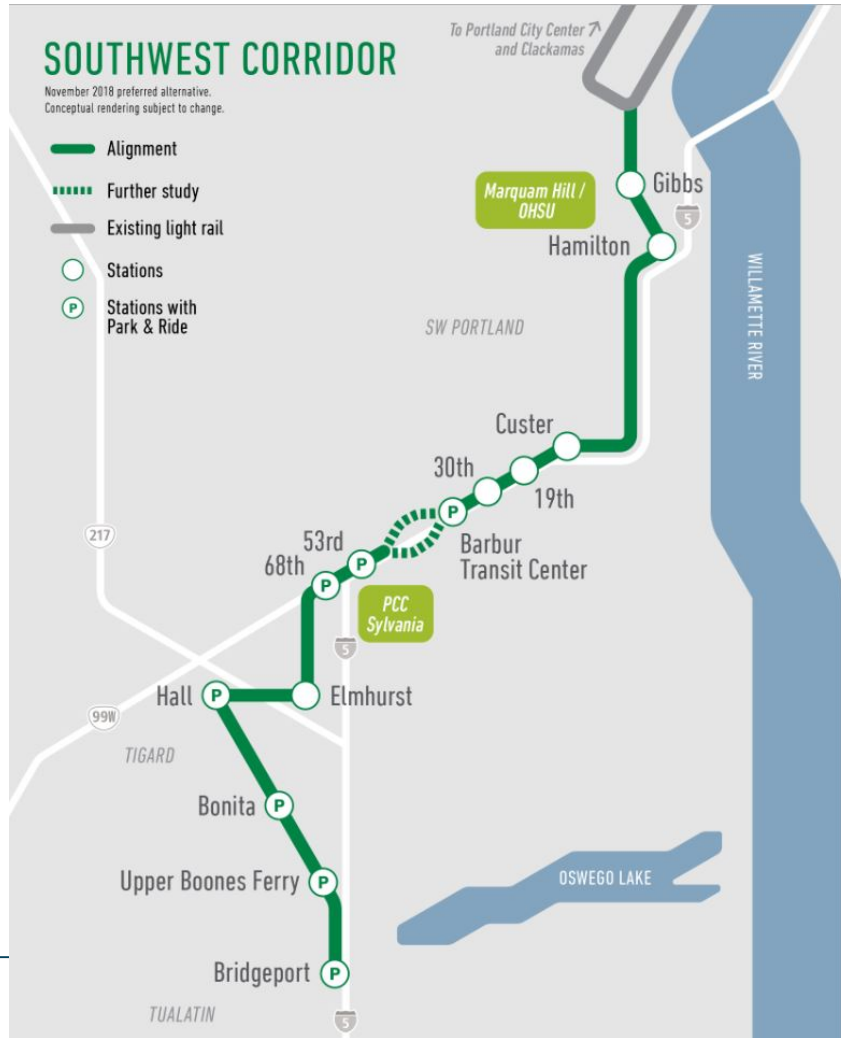
TIMELINE



SOUTHWEST CORRIDOR

November 2018 preferred alternative.
Conceptual rendering subject to change.

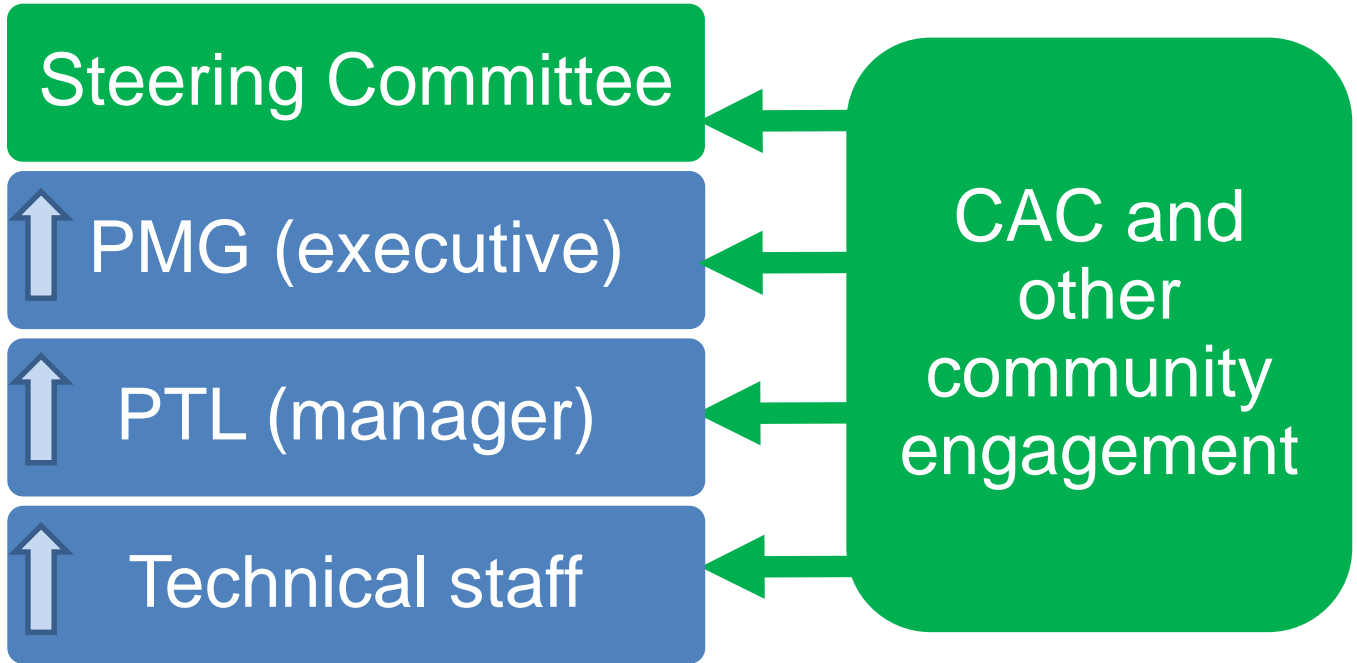
- Alignment
- ⋯ Further study
- Existing light rail
- Stations
- Ⓟ Stations with Park & Ride



Partners



Decision-making



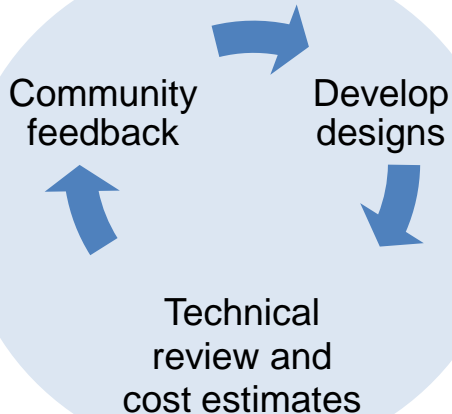
CAC Role

- Sounding board for design options
- Represent broader communities; help facilitate two-way communication
- Work together in good faith toward the best possible light rail project for the region

CAC Role

- Speak your mind and share the air
- Come prepared
- Disclose conflicts of interest

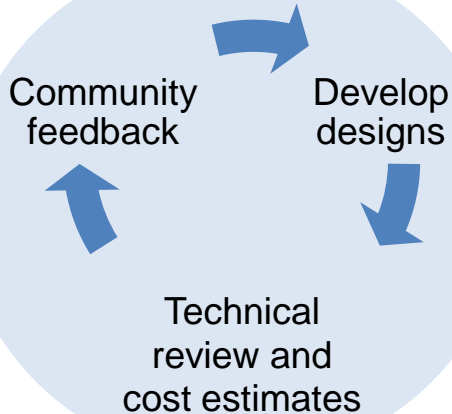
Project Development



- Respond to issues in DEIS; define mitigation in FEIS
- Refine project scope, cost
- Secure 30% of local funding
- Advance design to 30%

2019-2020

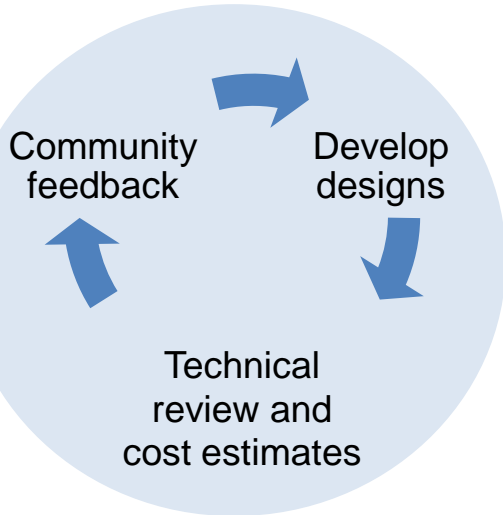
Engineering



- Refine designs
- Secure all local funding
- Advance design to 100%
- Begin property acquisition, early construction

2021-2022

Construction, startup



2023-2027

- Full Funding Grant Agreement (FFGA) from Federal Transit Administration (FTA)
- Construction and mitigation
- Testing and training

Finance

- ✓ Regional funds for project development
- Partner contributions
- Regional transportation funding measure: November 2020
- Federal Transit Administration (FTA) New Starts grant program

SW Equitable Development Strategy (SWEDS)



- Ensure opportunities for all current and future SW Corridor residents
 - Housing
 - Workforce development
 - Business stabilization
- Collaboration with public, private, and non-profit partners
- Pilot programs
- Identify pre-light rail investments

Near-term design topics

Feb	Mar	Apr	May	June
Crossroads route				
Bonita to Bridgeport route				
Marquam Hill Connector type				
	Park & Rides			
		Station areas		



Design Team: SWTP

SW Transit Partners:

AECOM, David Evans & Associates, Parametrix

Akana*

Barsum Consulting*

Brightside Engagement*

CH2M

DKS Associates

Donaldson Enterprises*

Elcon Associates*

Epic Land Solution, Inc*

Faithful+Gould

Global Signals Group

Global Transportation Engineering*

IML Services*

LTK Engineering Services

Life Simplified*

Maintenance Design Group/HDR*

Ott-Sakai & Associates*

Shannon and Wilson

Triunity Engineering & Management*

* DBE, MBE, and/or WBE

Design Team: UDIG

Urban Design Integration Group:

ZGF, VIA, Mayer-Reed

2. Ink studio*

ALTA Planning & Design

Architectural Applications

Carleton Hart

Cascadia Partners**

Consult: Ron Stewart**

DAO Architecture*

Donaldson Enterprises*

ECONorthwest

Fehr & Peers

Greenworks

Holst Architects*

Larco/Knudsen**

Merryman Barnes Arch*

Marianne Zarkin LA*

NNA LA*

Pacific Habitat

Winterbrook Planning**

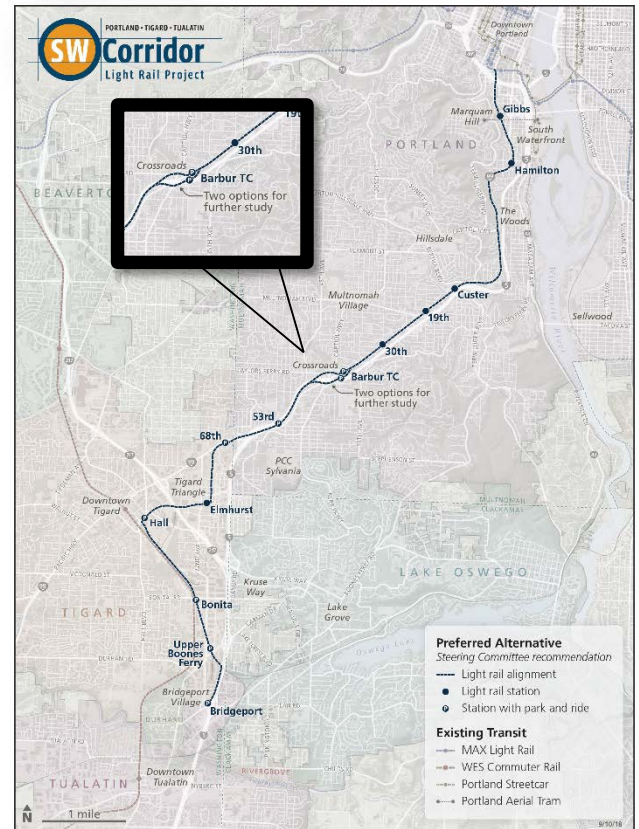
* DBE, MBE, and/or WBE

** ESB

Crossroads

LPA

- Steering Committee directed more study of Refinement 2 and Alternative B2 prior to the FEIS
- CAC also recommended a third idea



Community Engagement

- Letter to 60 property owners
- Three meetings attended by 190 people
- 125 comments by email



October options



Alternative B2

from Steering Committee



Refinement 2

from Steering Committee



Smith

from neighbor suggestion
and CAC



Smith Modified

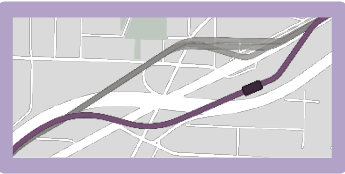
developed by staff



Collins

developed by staff

December options



Alternative B2

B2 – station near pedestrian bridge

B2 – station near Barbur*



Collins

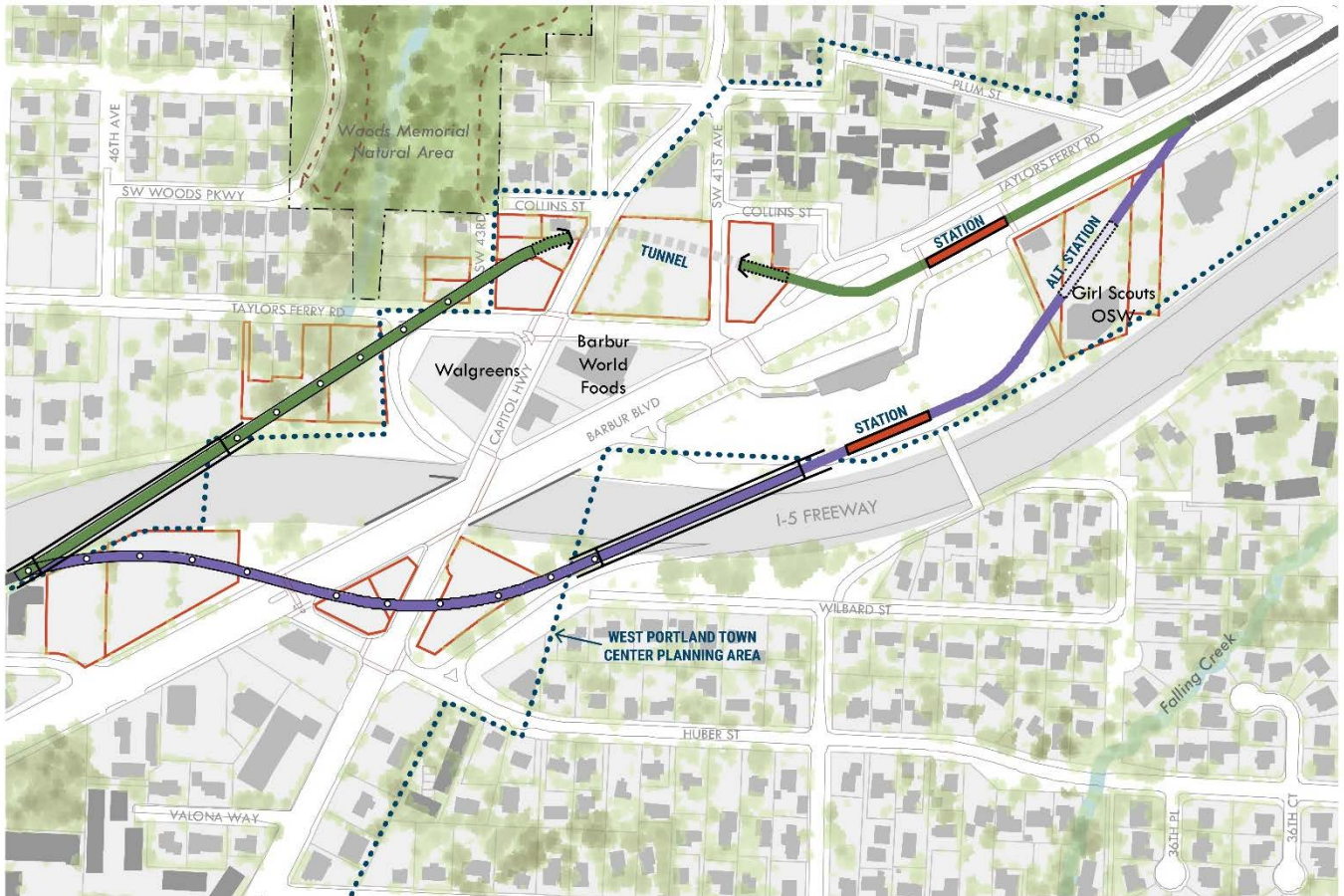
Collins – station on Collins

Collins – station on Collins w/buses*

Collins – station on Barbur*

*** New variations**

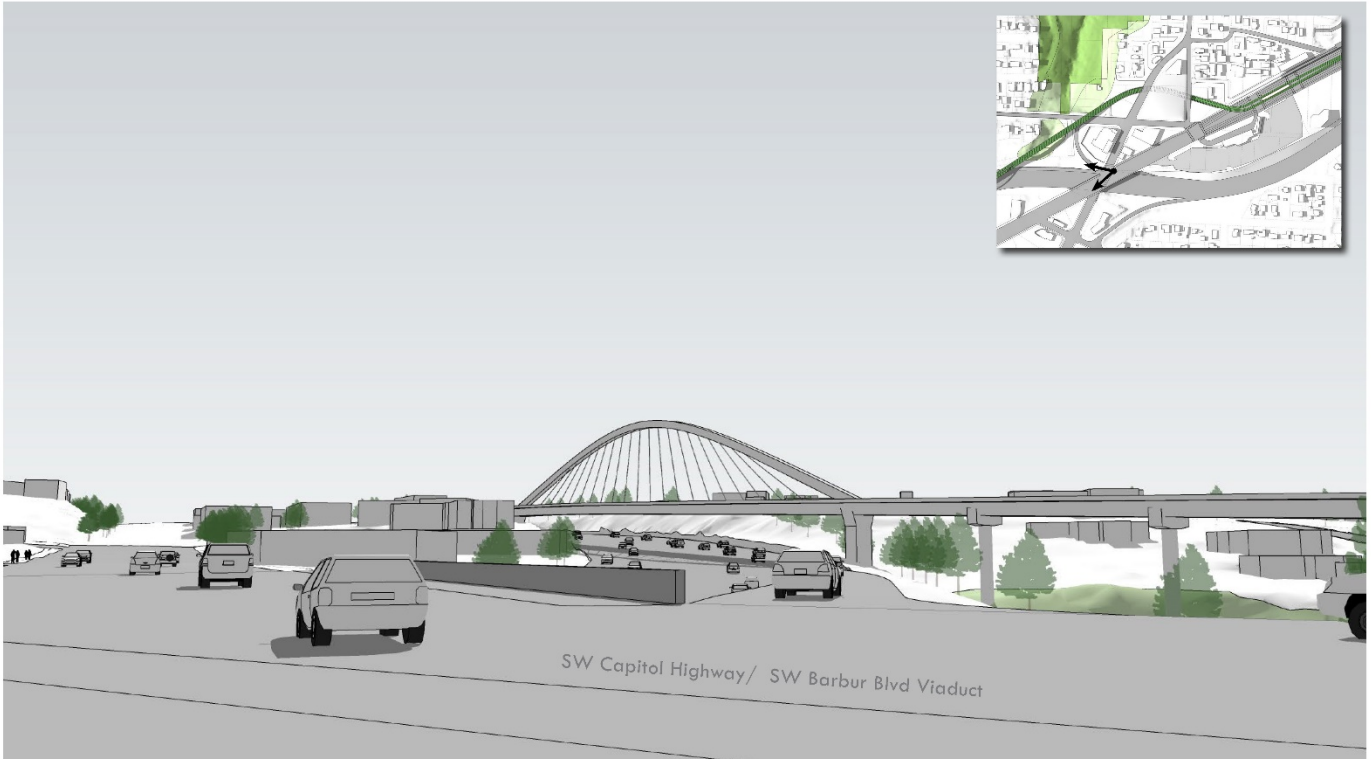
B2 / Collins Comparison



Collins

DRAFT 3D VIEWS - SEGMENT B - CROSSROADS

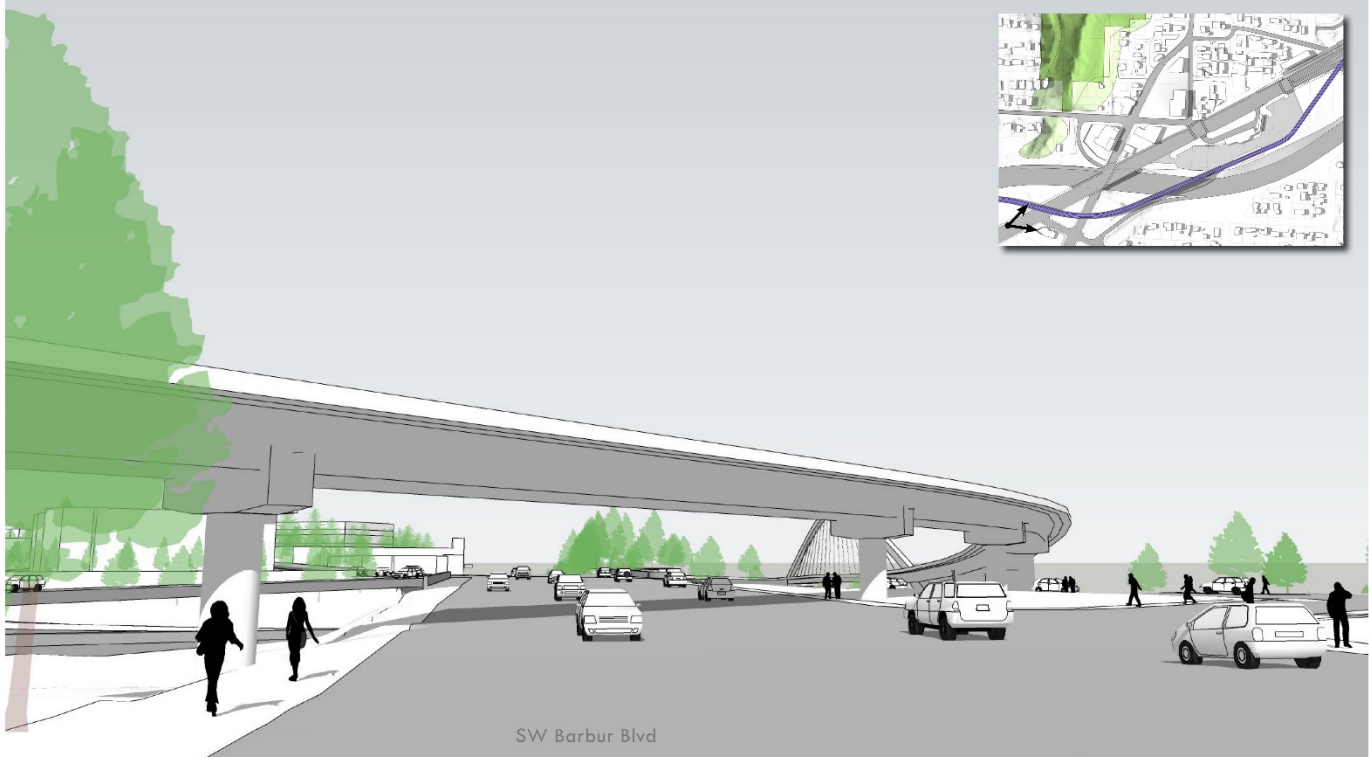
Collins Alignment - View to E from SW Capitol Highway Viaduct



B2

DRAFT 3D VIEWS - SEGMENT B - CROSSROADS

B2 Alignment - View to NE from Barbur Blvd towards I5/ Viaduct



SW Barbur Blvd

What we heard

Route preference

- Support for B2
- Concerns about Collins: impacts to Woods Creek, park, businesses and homes

Crossroads area

- Concern about traffic congestion
- Desire for safe, comfortable walking and biking; easy access between MAX, bus, Park & Ride

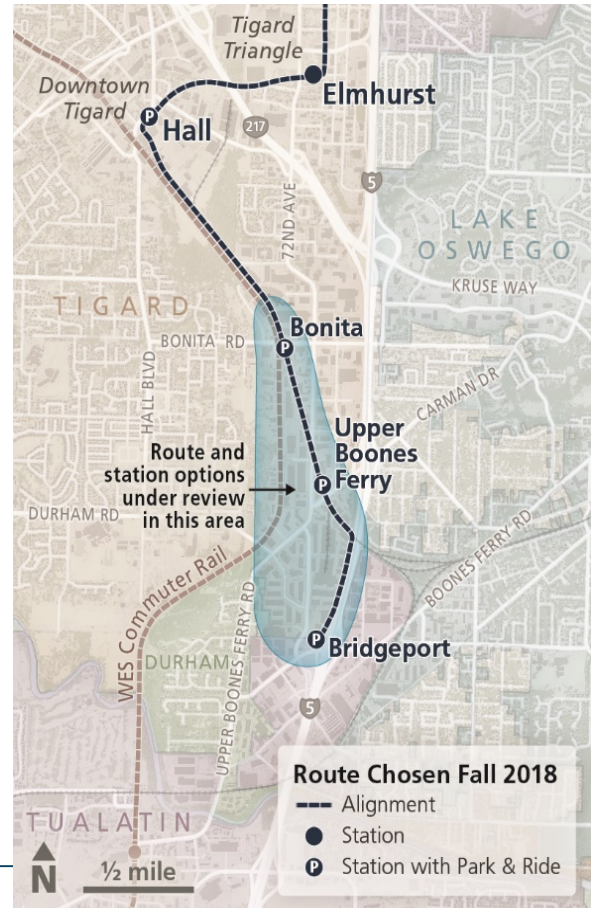
New information

- No significant cost difference between Collins and B2
 - Support column for lower-cost I-5 bridge would trigger additional impacts
- Complexity of utility conflicts via Collins

Bonita to Bridgeport

Locally Preferred Alternative (LPA) route between Bonita and Bridgeport

- Draft Environmental Impact Statement (DEIS) identified significant **traffic issues at Upper Boones Ferry Rd** at-grade crossing
- DEIS received hundreds of comments advocating against **Village Inn displacement at Bridgeport station**

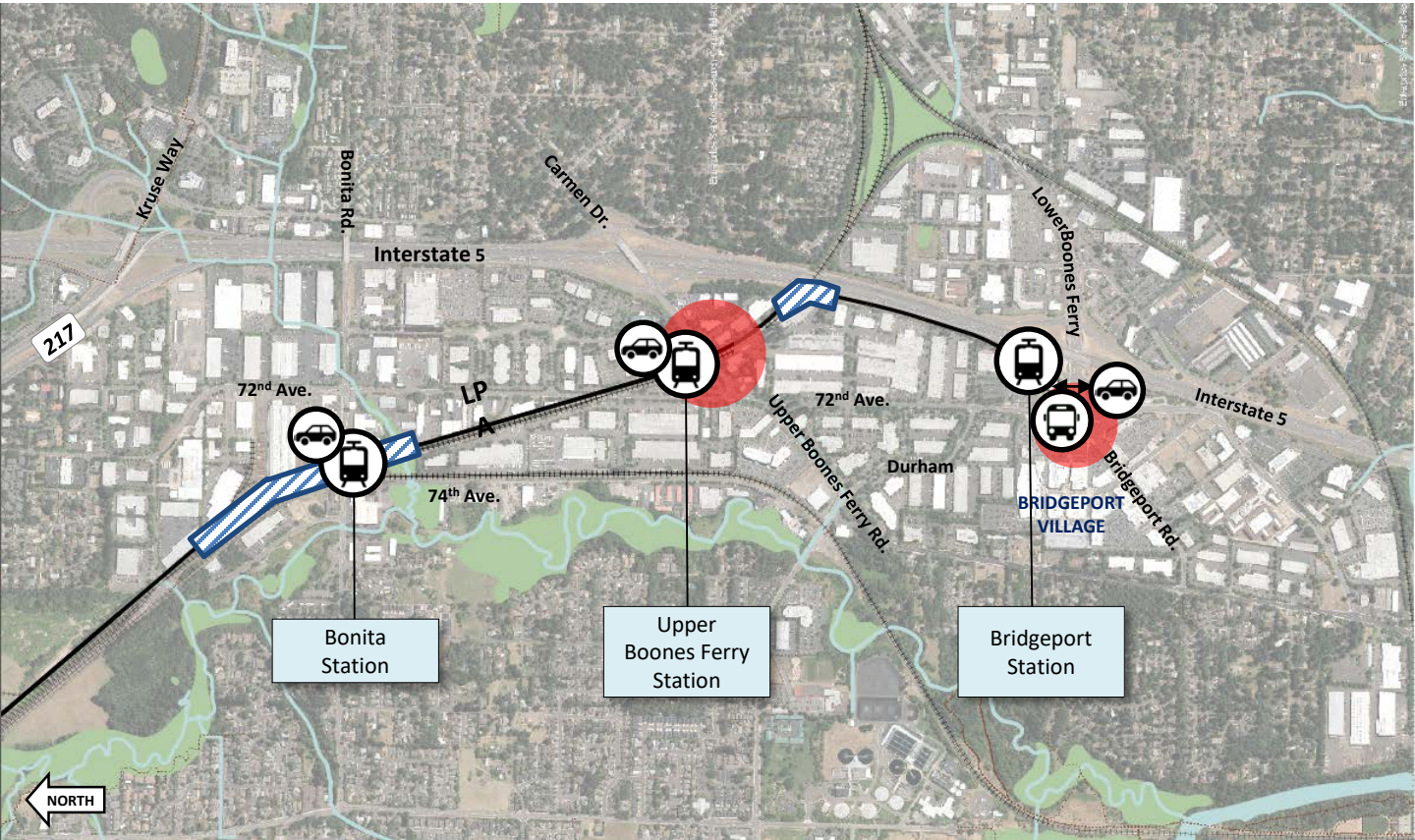


Community Engagement

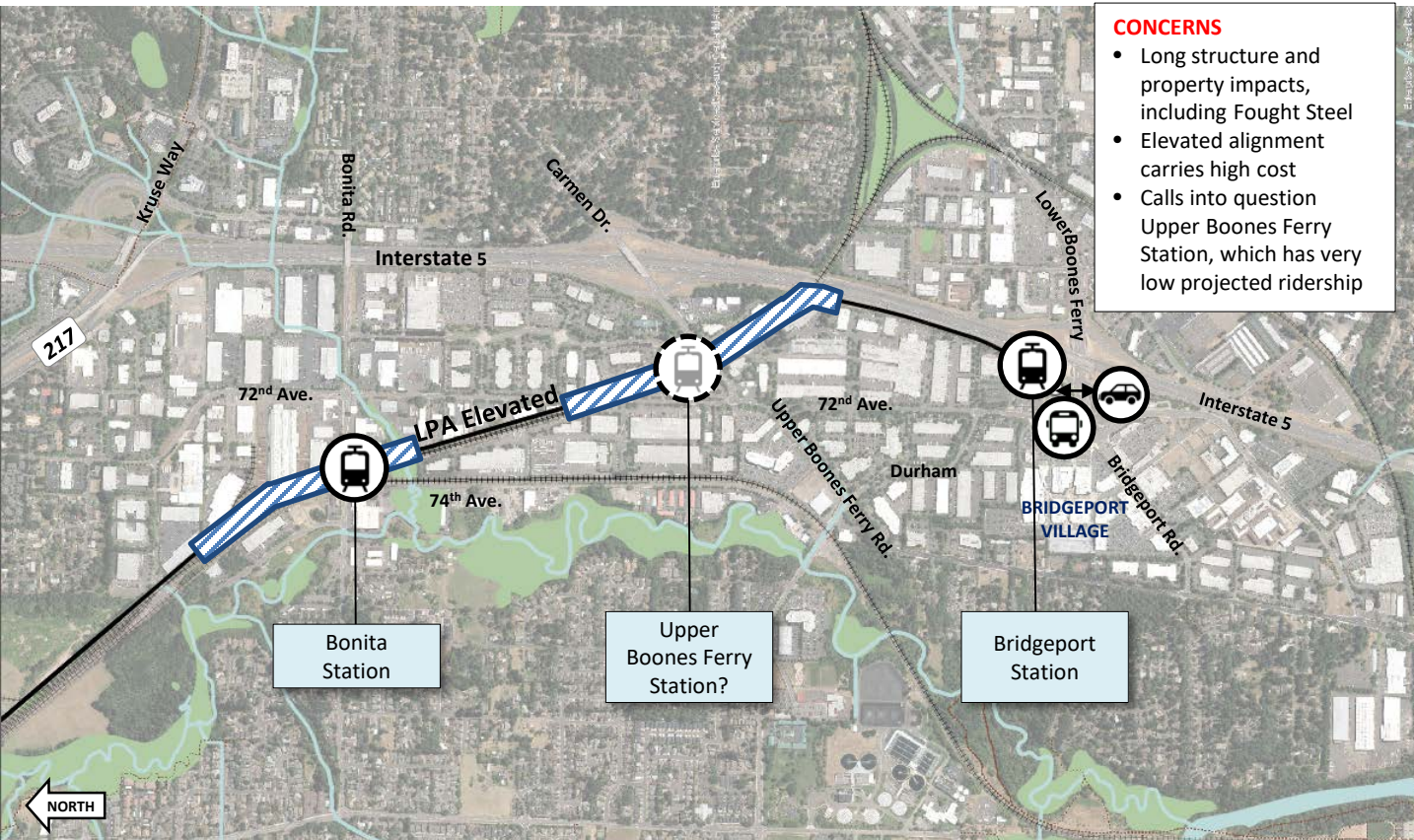
- Letter to 70 property owners
- Meeting attended by 60 people



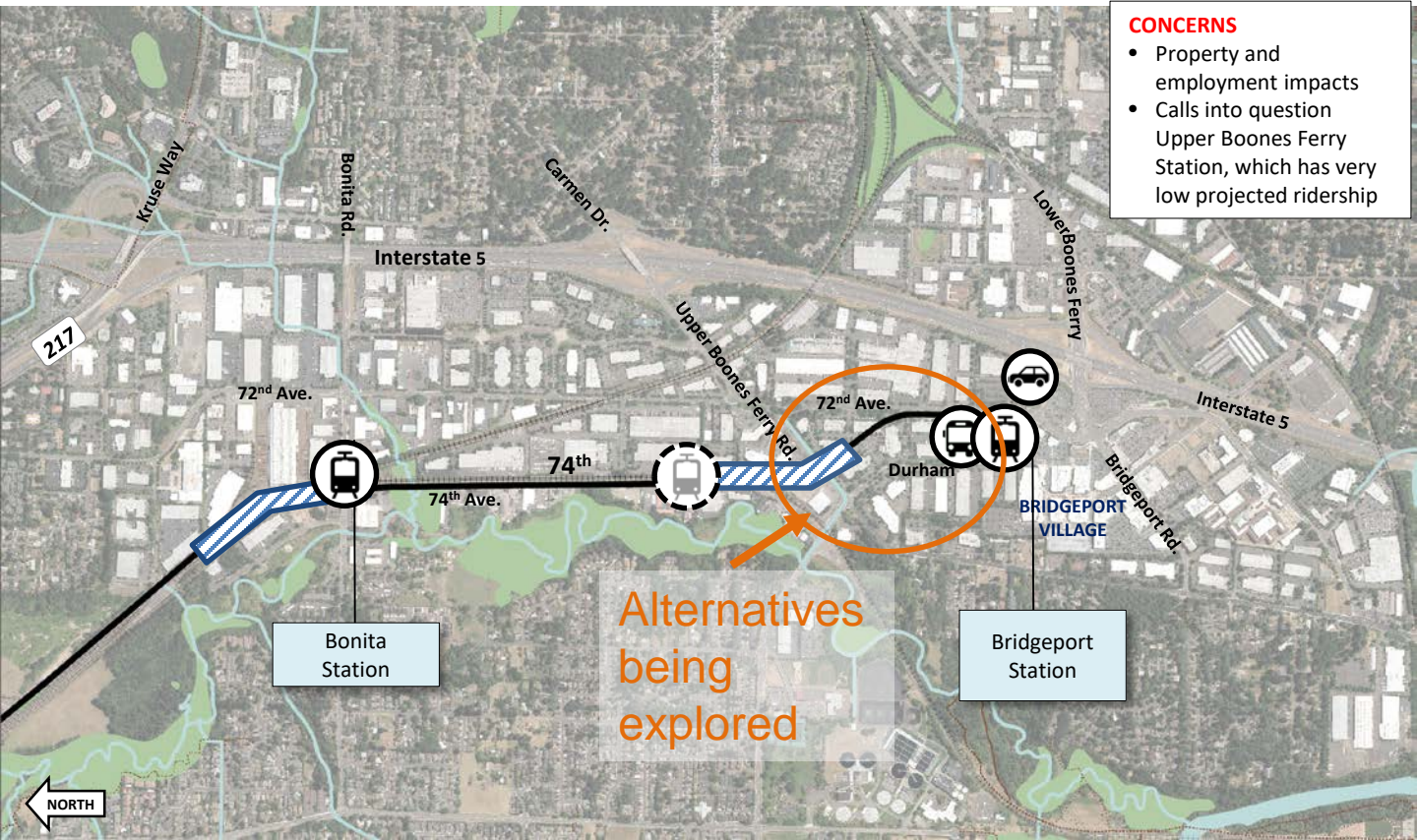
Locally Preferred Alternative (LPA) selected by Steering Committee



2019 Design Exploration: LPA Elevated Route



2019 Design Exploration: 74th Ave Route



- CONCERNS**
- Property and employment impacts
 - Calls into question Upper Boones Ferry Station, which has very low projected ridership

Bonita Station

Bridgeport Station

Alternatives being explored

What we heard

- Concerns from potentially impacted property owners
- Concerns about pedestrian access, safety
- Preference to avoid at-grade crossings; concerns about traffic
- Preference for consolidated station, bus hub, Park & Ride



Community Advisory Committee

Steering Committee

Community Meetings

CAC

March 7

6 p.m.

Girl Scouts

**Steering
Committee**

Feb 11

9 a.m.

1900 Bldg

**Marquam
Hill
Connector**

Feb 13

4 p.m.

OHSU

**Bonita to
Bridgeport**

Feb 21

6 p.m.

Tigard
Library