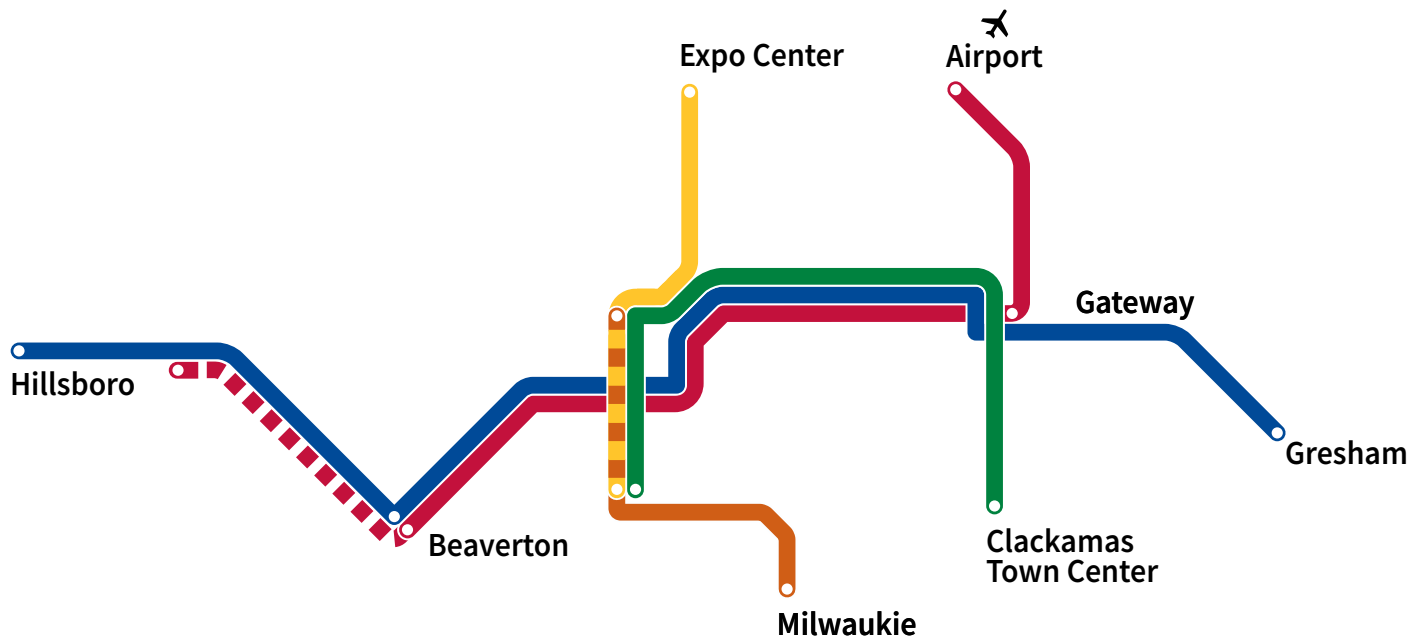


A BETTER RED



A Better Red extends MAX Red Line west to serve 10 more stations and improves schedule reliability for the entire MAX system.



More service

Extending the MAX Red Line west allows more people to enjoy a one-seat ride to Portland International Airport and other destinations. The extension improves MAX frequency at 10 stations in Beaverton and Hillsboro:

- ▶ Beaverton Central
- ▶ Millikan Way
- ▶ Beaverton Creek
- ▶ Merlo/SW 158th
- ▶ Elmonica/SW 170th Ave
- ▶ Willow Creek/SW 185th TC
- ▶ Quatama
- ▶ Orenco
- ▶ Hawthorn Farm
- ▶ Fair Complex/Hillsboro Airport

Improved reliability

MAX Red Line has two single-track sections, near Gateway and Portland International Airport, where trains traveling in opposite directions have to take turns. These bottlenecks affect schedule reliability for the entire MAX system, which has grown substantially since the Red Line was constructed. Adding a second track in these sections will improve service for all riders.

New connections for people biking and walking

Near the new tracks at Gateway and Portland International Airport, new multi-use paths will create more options for accessing transit, getting around on foot, bike, scooter and other mobility devices, and better access for emergency services.

Improvements to be constructed in three areas

At Fair Complex/Hillsboro Airport MAX Station

Crews will work on signals and switches in the existing trackway, and build a new walkway and break facility for MAX operators.

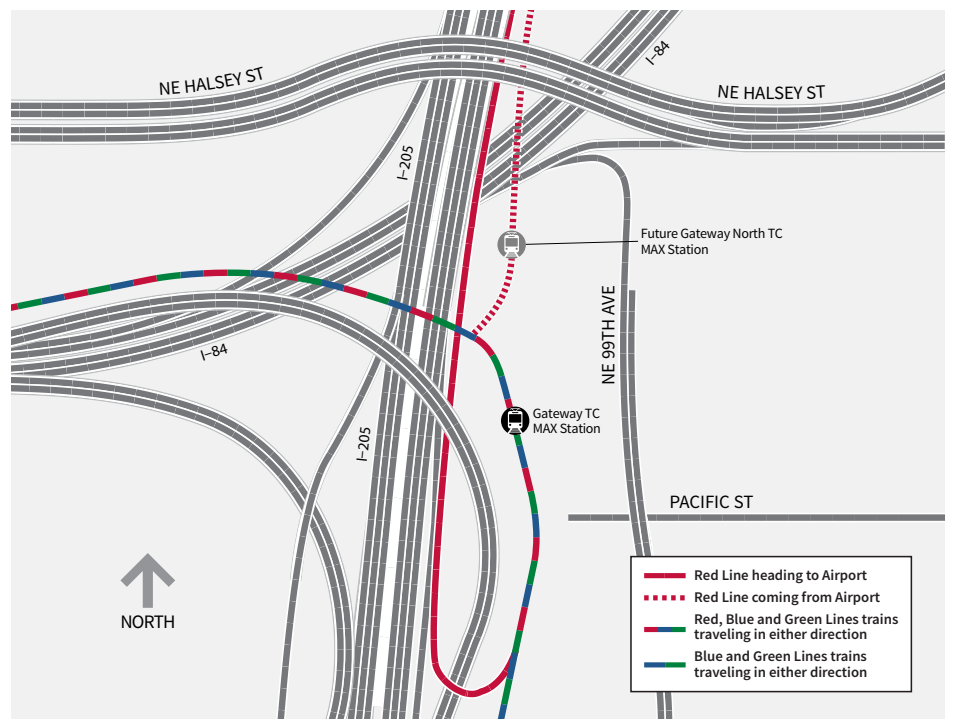


Conceptual rendering subject to change

At Gateway/NE 99th Ave Transit Center

A new MAX station platform will be constructed about 500 feet north of the existing transit center. This new platform will serve Red Line trains coming from Portland International Airport only. All other trains will continue to serve the existing platforms.

Two new bridges will be constructed to accommodate the second track:





Conceptual rendering subject to change

- ▶ Spanning existing MAX track and I-205 Multi-Use Path adjacent to Gateway Green Park.
- ▶ Spanning Interstate 84 and Union Pacific Railroad tracks.

A new pathway will connect the new platform with the existing platforms and bus stops., and extend north on the new bridge over I-84, into Gateway Green Park.

At Portland International Airport

The second track will be constructed adjacent to the existing track, along with a new multi-use path between the MAX station and NE 82nd Way.



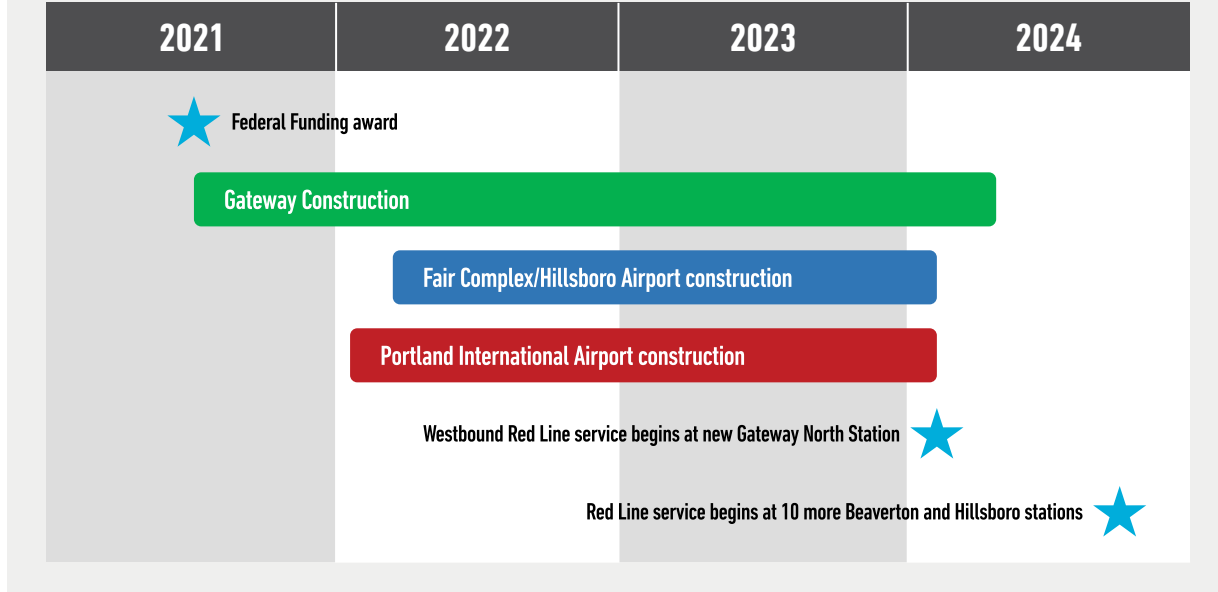
Conceptual rendering subject to change



Conceptual rendering subject to change

Timeline

ESTIMATED PROJECT SCHEDULE



What to expect during construction

Construction information will be updated regularly at trimet.org/betterred. Some things to expect include:

- ▶ Closure of some Park & Ride spaces at Fair Complex/Hillsboro Airport Station and Gateway/NE 99th Ave Transit Center
- ▶ MAX service interruptions, with shuttle buses connecting stations
- ▶ Various lane closures, including nighttime lane closures on I-84
- ▶ Weekend closures of I-84
- ▶ Construction staging in a small portion of Gateway Green Park
- ▶ Short-term closure of I-205 Multi-Use Path adjacent to Gateway Green Park

- ▶ Daytime pile driving adjacent to I-84 at Gateway
- ▶ Nighttime and weekend construction activity

Economic benefits

In addition to extending MAX service and improving system reliability, the project is expected to create up to 1,200 jobs for the region. The project has a goal of awarding 19 percent of the design funding and 20 percent of the construction funding to Disadvantaged Business Enterprise (DBE) firms, supporting businesses owned by people of color and women.

Learn more at trimet.org/betterred/benefits

Contact

Questions about the Better Red project? Visit trimet.org/betterred to learn more. Or, call 503-962-2150. Email us: betterred@trimet.org.

Available in other formats